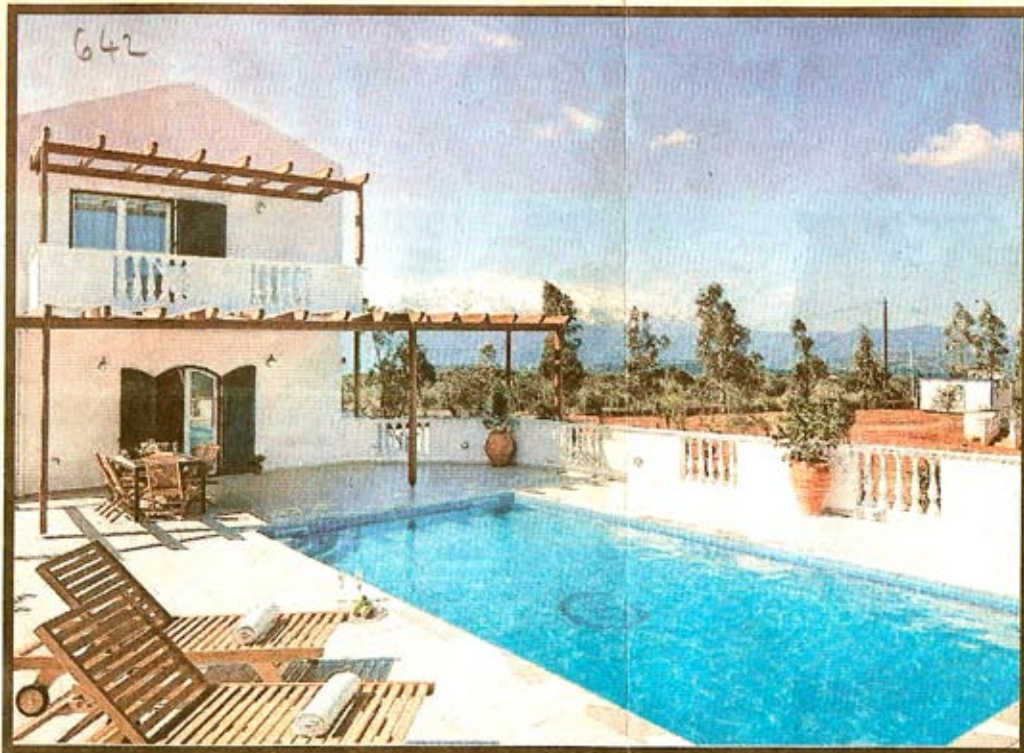


investment opportunity

Crete, from 269,000 euros



Just two of the nine individually-designed villas at the Litsarda Villas development, in western Crete

CURRENTLY available close to the idyllic village of Litsarda, in western Crete, is a development of nine individually-designed homes in an elevated location, which enjoy panoramic views of Crete's White Mountains and Souda Bay, in the Mediterranean.

Located 40 minutes by road from Chania International Airport (75 minutes from Heraklion Airport), the development is close to the heart of the village of Litsarda and two kilometres from the shops, bank, post office and healthcare facilities in the small

town of Vamos. The villas have floor areas ranging from 127 sq m to 170 sq m, including a self-contained lower ground floor in each property.

Purchasers can opt to use the space for up to three extra bedrooms with a second bathroom, in addition to the

two or three bedrooms on which the design of the villa is based.

Each villa occupies an individual plot of up to half an acre, planted with 30 olive and fruit trees. Owners can produce their own olive oil by having their harvest pressed and bottled by the local co-

operative in Vamos. Prices of the properties still available at Litsarda Villas start at 269,900 euros for a two-bedroom villa with a floor area of 127 sq m, including a self-contained lower ground floor with the potential to create three additional bedrooms.

The properties are supplied fully-furnished and equipped, so prices include everything from beds to bottle-openers. ■ CALL Caversham-Barnes on 0118 9483202, or visit the company's new-look website, launched this month, at www.caversham-barnes.com